

wilog303/306

Universal Data Logger for
Wind, Weather and Climate



 **wilmers**
Environment • Measurement • Systems

Capturing the Future

Data Acquisition

We offer complete measuring systems based on **wilog303** and **wilog306** data loggers recording wind, climate and environmental data, providing the following advantages:

- **Easy Operation**

Easy operation of the system is ensured by its simple design and the intuitive PC software. Download of data is carried out locally via notebook or pocket PC, or by remote data transfer via GSM or fixed telephone networks.



- **Reliability**

Proven components guarantee a maximum of reliability and security. We offer a broad range of sensors from inexpensive sensors for simple tasks up to sensors featuring a maximum of precision and reliability. Our measuring systems meet national and international guidelines of MEASNET, IEC, VDI, and WMO.

- **Data Security**

Measured data are stored in non-volatile ring buffer memory to ensure security of data even in case of power loss.

- **Low Power Consumption**

Because of their low power consumption **wilog** data loggers are ideal devices for solar or battery powered longterm measurements. Additional reduction of power consumption at remote sites is achieved by a switching output for time-scheduled operation of the GSM modem.

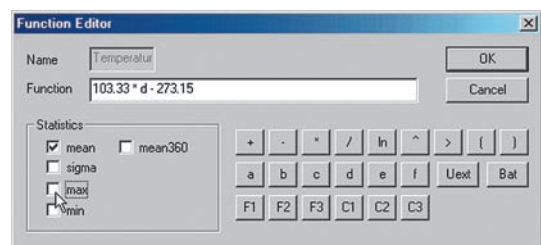
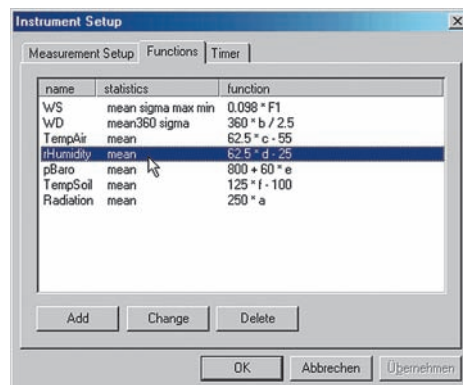
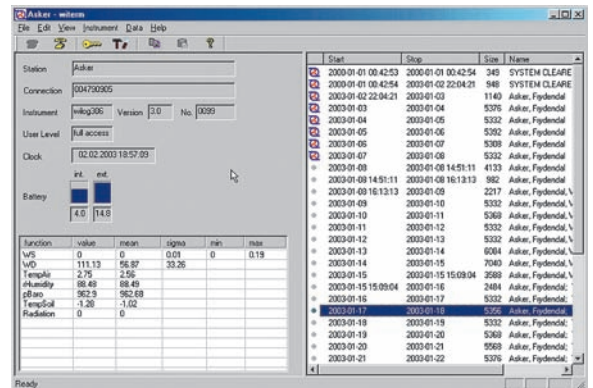


Data Management

The intuitive, multilingual PC software **witem** provides all functions from the configuration of the data logger up to the evaluation of measured data in one integrated program environment.

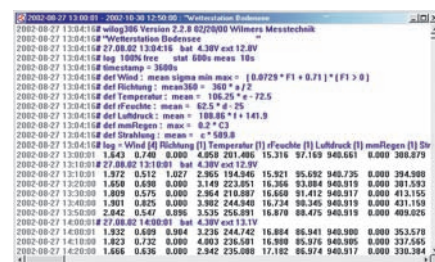
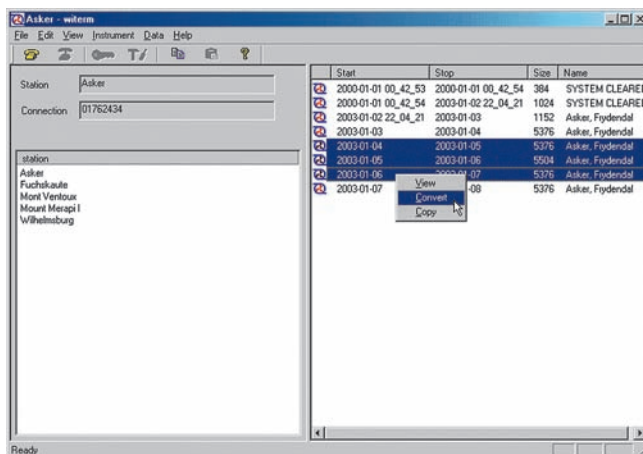
• Management of Measurement Stations

witem manages an unlimited number of measurement stations. Menu functions allow easy configuration of **wilog** data loggers. Sensor characteristics are entered as mathematical formulas in order to consider individually calibrated sensors and to store data in real engineering units (e.g., m/s for wind speed or °C for temperature).



• Management of Measured Data

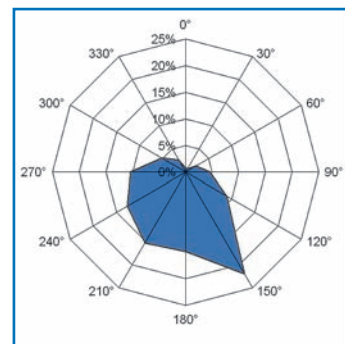
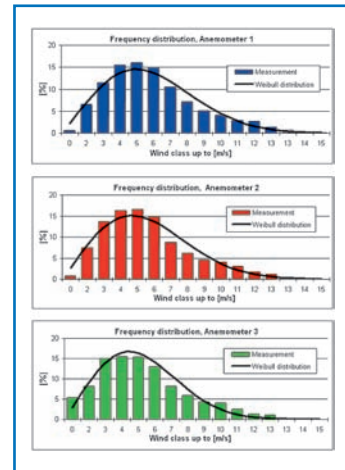
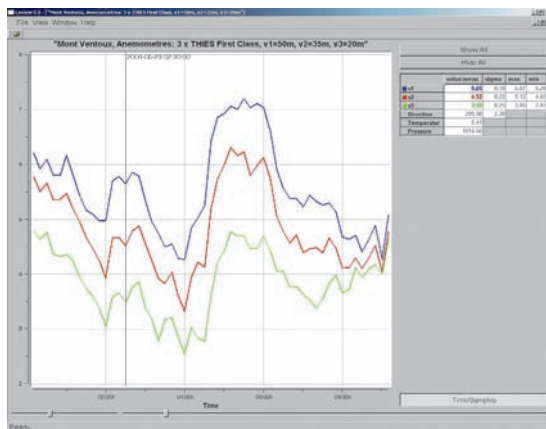
witem provides local download of measured data as well as remote download via modem. Transferred data are presented in a file explorer for quick access and data check.



Data Postprocessing

- **Postprocessing of Measured Data**

witern allows the conversion and export of measured data to different formats (e.g., ASCII time series) for further processing in commercial software like WAsP, WindPRO, or MS-Excel. A statistical analysis of wind data is provided. An MS-Excel application displays all relevant statistics for wind turbine site assessment in diagrams and tables.



Your distributor



Capturing the Future